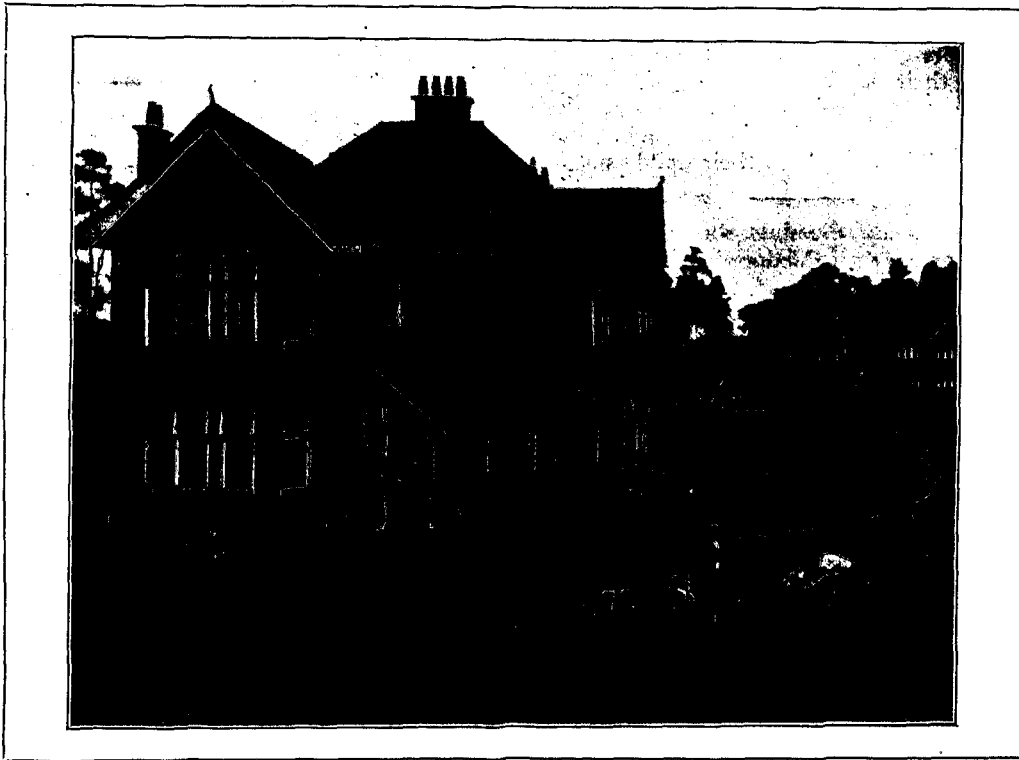


NURSING ECHOES.

"I dread to look at the appointments announced in the JOURNAL in these days," more than one Bart's nurse has said to us during the past year. "Whoever gets promotion—it is sure not to be a Bart's trained woman." And, indeed, this is very true, and it is a very serious result of the suicidal policy of the Election Committee in degrading the standard of their three years' certificate of training by appointing (as Superintendent of Nursing) a lady with

selves they can't expect the Committees of other hospitals to select Matrons trained by them," the chairman of a well-known hospital said to us recently; "the fact is, public confidence has been shaken in the management of the nursing school, and it will require some evidence of self-confidence to re-establish it in public favour." The only consolation is, that St. Bartholomew's Hospital nurses have the sympathy of the whole nursing world in the injury done them, with the exception of those who conceived and carried out the injury.



"SUNBEAM," BOURNEMOUTH.

an inferior qualification from an alien school. This appointment which the medical staff permitted to go by default (we have no doubt the Governors would have been guided by them if they had stood by the nurses) has proved, as we knew it would, a very cruel injustice to the nurses trained at St. Bartholomew's Hospital, and we draw attention to it in justice to the nursing staff.

Over and over again during the past two years well-qualified Bart's nurses have applied for promotion, and even in inferior positions have been superseded by nurses trained elsewhere. "If they can't train a Matron for them-

The Admiralty is prepared to receive applications from able-bodied young men, who can produce a very good character, for admission to the Sick Berth Staff of the Royal Navy. Applicants must be intelligent, and able to read and write and possess a fair knowledge of arithmetic. On passing a preliminary examination by a Recruiting Officer they will be sent free of expense to Chatham, Portsmouth, or Devonport for final examination, and if accepted at these ports will be entered as Probationary Sick Berth Attendants. They will undergo a course of instruction at the Royal Naval Hospitals before being drafted to H.M. ships, and at the end of their probation, if

[previous page](#)

[next page](#)